

CRUISER RACER

www.cruiser-racer.com

-646-

GP 42 Roma

SOLD



CRUISER RACER

www.cruiser-racer.com

Buscarons, 6. 08022 Barcelona (Spain)

Tel.: (+34) 934 186 632

Mobile: (+34) 616 420 634

E-Mail: info@cruiser-racer.com

C R U I S E R R A C E R

www.cruiser-racer.com

| GENERAL | |
|----------------------|--|
| Name | GP 42 Roma |
| Model | GP 42 |
| Type | RACER |
| Year | 2006 |
| Hull Material | Carbon |
| Flag | italian |
| Color | Carbon look. |
| Lying | italian |
| Price | PRICE UNDER REQUEST |
| Vat | NOT PAID |
| Slogan | The real sailing speed |
| Final Notes | Design n.: 605 Race Results: 07/2006: VALENCIA COPA DE LA REYNA - IMS DIVISION 08/2006: PALMA COPA DEL REY - IMS DIVISION 08/2007: Winner Trofeo Quebramar - Cascais - Portugal 2007: 3rd Overall 2007 GP42 International Racing Circuit 2009: 7th Overall GP42 Worlds |

| DESIGN | |
|-----------------|-------------------|
| Builder | Latini Marine |
| Designer | Farr Yacht Design |

| DIMENSIONS | |
|----------------|-------------|
| Loa | 12.8 m |
| Lwl | 11.88 m |
| Beam | 3.90 m |
| Draft | 2.60 m |
| Ballast | 2,400 kg kg |

C R U I S E R R A C E R

www.cruiser-racer.com

Buscarons, 6. 08022 Barcelona (Spain)

Tel.: (+34) 934 186 632

Mobile: (+34) 616 420 634

E-Mail: info@cruiser-racer.com

CRUISER RACER

www.cruiser-racer.com

DIMENSIONS

| | |
|---------------------|-------------|
| Displacement | 4,400 kg kg |
|---------------------|-------------|

ENGINES

| | |
|------------------|--------------------------|
| Engines | Yanmar Diesel 3YM30 hp29 |
| Propeller | 2 blades Gori |

GALLEY

| | |
|--------------|--|
| Notes | Aluminum, 3 ring burner – custom. Galley sink: Carbon - custom. |
|--------------|--|

INSTRUMENTS

| | |
|--------------------|--|
| Electronics | B&G Electronic Instruments. |
| Gps | yes. |
| Vhf | VHF Radio. |
| Notes | Hidra system. 2 – FFD Bulkhead Displays. 4 – 20/20 Mast Displays. All electronic equipment is calibrated. New wind sensor. |

ELECTRICAL

| | |
|-------------------------|---|
| Batteries Number | 2 batteries x 75 Ah = 450Ah. 1 Engine battery x 75Ah. |
| Notes | Electrical panel: Custom 18 switches. |

SPARS & RIGGING

CRUISER RACER

www.cruiser-racer.com

Buscarons, 6. 08022 Barcelona (Spain)

Tel.: (+34) 934 186 632

Mobile: (+34) 616 420 634

E-Mail: info@cruiser-racer.com

C R U I S E R R A C E R

www.cruiser-racer.com

SPARS & RIGGING

| Sails | |
|--------------|--------------------------|
| | 2011 |
| | - Main IRC Fathead North |
| | 2009 |
| | - Main North |
| | - J1 North |
| | - A2-1 North |
| | - A2+ North |
| | 2008 |
| | - M1-Main Banks |
| | - M2-Main Banks |
| | - J1 Banks |
| | - J1-B Banks |
| | - J2-1 Banks |
| | - 3 x J2-3 Banks |
| | - J2-4 Banks |
| | - J3 Banks |
| | - 2 x A1 Banks |
| | - A2 Int. Banks |
| | 2007 |
| | - J1 Banks |
| | - J2-2 Banks |
| | - J2 Banks |
| | - J3-Banks |
| | - A1.5 Banks |
| | - A2 Banks |
| | 2006 |
| | - Main Banks |
| | - Delivery main |
| | - Try sail |
| | - J1 Banks |
| | - J4 Banks |
| | - Delivery jib |
| | - Storm jib |
| | - 2 x A1 Banks |
| | - A2.5 Banks |
| | - Code 0 Banks |

C R U I S E R R A C E R

www.cruiser-racer.com

Buscarons, 6. 08022 Barcelona (Spain)

Tel.: (+34) 934 186 632

Mobile: (+34) 616 420 634

E-Mail: info@cruiser-racer.com

SPARS & RIGGING

| | |
|--------------|---|
| Notes | <p>Hall Spars - rule optimized carbon section with taper. 2 sets of carbon fiber spreaders. Carbon fiber boom.</p> <p>RUNNING RIGGING: 6 - Halyards with Tylaska T-8 shackles, tapered. 1 - reefline: 10 mm. 2 - genoa sheets: 10 mm with Equiplite shackles. 1 - mainsheet: 10 mm to suit German type mainsheet system. 2 - spinnaker sheets, 8 mm with Tylaska T-8 shackles, tapered. 2 - spinnaker afterguys, 10 mm, tapered. 1 - tackline including T-12 Large Bail shackle.</p> <p>STANDING RIGGING: Navtec SERIES 800, L 834 tip cup, C 890 turnbuckles. Mast Jack - (2) bricks, (2) external hydraulic cylinders and a pump-set with gauge. Composite Backstay. Harken Carbo headsail Foil.</p> |
|--------------|---|

DECK

| | |
|----------------|--|
| Winches | <p>Harken Grand-Prix winch package.2 - 50STRQ Halyard winches.2 - 55TCR-Wide Body 3 Speed Pedestal-driven Primary winches.2 - 50.2STR Mainsheet winches.2 - 50.2STR Backstay winches. Carbon composite belt-drive pedestal grinder. Assorted winch handl</p> |
| Notes | <p>Harken - full compliment of grand-prix deck hardware. Spinlock, jammers and organizer.</p> |

SAFETY

| | |
|--------------|---|
| Notes | <p>First-aid Kit. Lifejackets. Pyrotechnics. Life lines 2.</p> |
|--------------|---|

CONSTRUCTION

| | |
|-------------|-------------------------------|
| Keel | <p>Weldox fin, lead bulb.</p> |
|-------------|-------------------------------|

CRUISER RACER

www.cruiser-racer.com

CONSTRUCTION

| | |
|--------------|---|
| | |
| Notes | <p>Steering: Tiller. Deck color: Silver Grey. Hull Male mould: CNC Cut frames - Mahogany Cold moulded and Fibre reinforced laminate. Hull Female Plug: glass fibres injected with epoxy resin, laminated on the male plug. Deck Male Mould: CNC Cut frames - Mahogany Cold moulded and plywood with reinforced laminate. Deck Female Plug: glass fibres injected with epoxy resin, laminated on the male plug. Construction materials: SP SYSTEM Carbon Fibres and Corecell/Airex foams. SP SYSTEM Epoxy resins with Pre-preg or Wet Systems.</p> |

ACCOMODATIONS

| | |
|--------------------|---|
| | |
| Bath Shower | Yes |
| Notes | As per ORC 42 Rule - Structural carbon. |

EXTRA NOTES

| | |
|--------------------|---|
| | |
| Extra Notes | <p>Shipping Cradle with keel cradle Toolbox. Engine serviced and new belts. Interior cushions. New pedestal grinder buttons. 2 jib sheet old with Tylaska. 4 Spinnaker Blocks. Spinnaker sheet 1. 2 Spinnaker Bob-stays. Batten ends for the main & 2 jibs. Harken handles.</p> |

CRUISER RACER

www.cruiser-racer.com

Buscarons, 6. 08022 Barcelona (Spain)

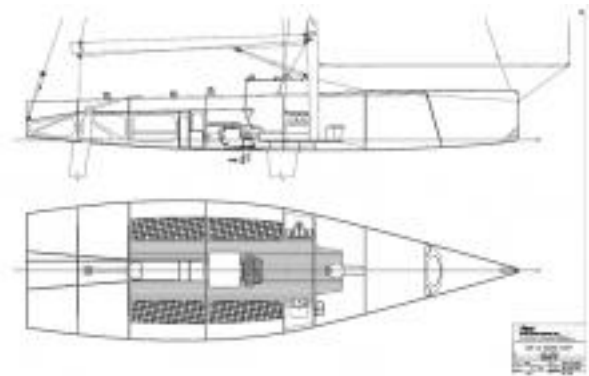
Tel.: (+34) 934 186 632

Mobile: (+34) 616 420 634

E-Mail: info@cruiser-racer.com

CRUISER RACER

www.cruiser-racer.com



CRUISER RACER

www.cruiser-racer.com

Buscarons, 6. 08022 Barcelona (Spain)

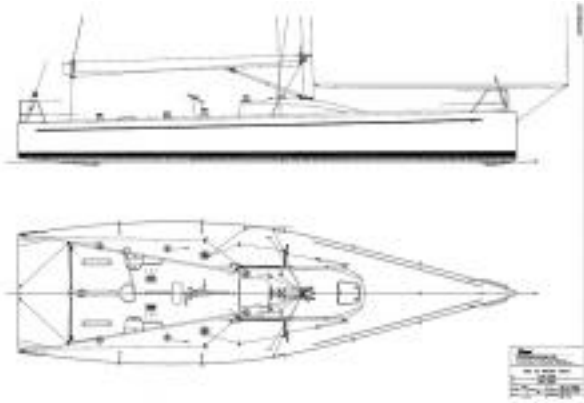
Tel.: (+34) 934 186 632

Mobile: (+34) 616 420 634

E-Mail: info@cruiser-racer.com

CRUISER RACER

www.cruiser-racer.com



CRUISER RACER

www.cruiser-racer.com

Buscarons, 6. 08022 Barcelona (Spain)

Tel.: (+34) 934 186 632

Mobile: (+34) 616 420 634

E-Mail: info@cruiser-racer.com

CRUISER RACER

www.cruiser-racer.com



CRUISER RACER

www.cruiser-racer.com

Buscarons, 6. 08022 Barcelona (Spain)

Tel.: (+34) 934 186 632

Mobile: (+34) 616 420 634

E-Mail: info@cruiser-racer.com