

CRUISER RACER

www.cruiser-racer.com

-63-

GS 42 Race 2005 Bohemia Express

SOLD



CRUISER RACER

www.cruiser-racer.com

Buscarons, 6. 08022 Barcelona (Spain)

Tel.: (+34) 934 186 632

Mobile: (+34) 616 420 634

E-Mail: info@cruiser-racer.com

C R U I S E R R A C E R

www.cruiser-racer.com

| GENERAL | |
|----------------------|--|
| Name | GS 42 Race 2005 Bohemia Express |
| Model | Grand Soleil 42 Race 2005 |
| Type | RACER-CRUISER |
| Year | 2005 |
| Hull Material | Epoxy |
| Flag | Czech |
| Sail Number | CZE 663 |
| Color | White |
| Lying | Italy |
| Price | PRICE UNDER REQUEST |
| Vat | NOT PAID |
| Slogan | Great oportunity at very good price |
| General Notes | Great design by Botin and Carkeek that won many regattas and still competitive nowadays. |

| DESIGN | |
|-----------------|---|
| Builder | Cantiere del Pardo |
| Designer | Botin & Carkeek |
| Notes | Racing bulb keel BOTIN CARKEEK modification in 2010 |

| DIMENSIONS | |
|---------------------|----------|
| Loa | 12.69 m |
| Beam | 3,67 m |
| Draft | 2,54 m |
| Ballast | 4.000 kg |
| Displacement | 6.600 kg |

C R U I S E R R A C E R

www.cruiser-racer.com

Buscarons, 6. 08022 Barcelona (Spain)

Tel.: (+34) 934 186 632

Mobile: (+34) 616 420 634

E-Mail: info@cruiser-racer.com

C R U I S E R R A C E R

www.cruiser-racer.com

| ENGINES | |
|------------------|--|
| Engines | Diesel Engine. Yanmar 38hp with saildrive. |
| Propeller | Two bladed Gori folding propellor |
| Notes | Spinlock throttle control unit in cockpit Fuel gauge Waterlock with silencer |

| TANKAGE | |
|--------------|--|
| Fuel | 75 LITRE stainless I |
| Water | Water tanks: 2 * 100 litre (flexible) . Fresh water system with Hand pumps at galley and heads basin I |
| Notes | Fuel Filter and Water Separator. |

| GALLEY | |
|---------------|--|
| Icebox | Insulated Ice Box. |
| Notes | Galley sink with overboard drain Vanity sink with overboard drain Manual bilge pumps: 1 Cockpit, 1 Below deck Electric Bilge Pump below deck Marine head plumbed for intake of sea water Flush seacocks on all openings below decks Fresh water filler above deck |

| INSTRUMENTS | |
|--------------------|-------------------|
| Electronics | B&G ELETTRONIC |
| Vhf | VHF sinmrad RD68f |

C R U I S E R R A C E R

www.cruiser-racer.com

Buscarons, 6. 08022 Barcelona (Spain)

Tel.: (+34) 934 186 632

Mobile: (+34) 616 420 634

E-Mail: info@cruiser-racer.com

INSTRUMENTS

| | |
|--------------|--|
| Notes | BGH130001 Hercules main processor 890-PK-12 Hercules no nmea display 332-PK-12 Hercules 20/20 display BGH030002 head of the vertical must 1.04 mt SEN-SPD-HPF speed sensor SEN-DPT-HPF depth sensor 486-00-009 compass sensor Heeling sensor Performance unit Antenna c-map egonos Antenna vhf + altoparlante esterno |
|--------------|--|

ELECTRICAL

| | |
|-------------------------|--|
| Batteries Number | Batteries: 2 x 80Amp hour gel batteries |
| Notes | 12 Volt DC distribution panel with appropriate breakers, switches etc. Battery condition meter Circuit breakers of appropriate amperage Main battery switch Alternator, 80Amp on engine ORC approved navigation lights Red & White dome lights for general illumination Recessed Halogen lights in saloon, galley, nav area Halogen reading lights in cabins |

SPARS & RIGGING

| | |
|-----------------------|--|
| Sails | 4 complete sets of sails. |
| Rigging | Rod rigging |
| Boom | Custom full depth carbon boom. Reef jammer located inside boom at forward end. Course outhaul to exi |
| Vang | rigid |
| Spinnaker Pole | Roller bearing Spinnaker pole track. Carbon spinnaker pole |

CRUISER RACER

www.cruiser-racer.com

SPARS & RIGGING

| | |
|--------------|--|
| Notes | PRE-RIG DIMENSIONS (provisory): I : 15,880 J : 4,747 P : 16,64 E : 6,16 SAIL AREA (provisory): MAIN : 61.23 m2 GENOA 42.85 m2 SPINNAKER 130.00 m2 Custom carbon rig: Hall spars USA Custom moulded deck collar Fine outhaul to lead back to mainsheet trimmer Running rigging in Spectra or Vectran or Dynema. |
|--------------|--|

DECK

| | |
|----------------|--|
| Winches | Primaries: HARKEN 48.3 R Halyard: HARKEN 45.2 STRQ Mainsheet: HARKEN 48.2 STR Backstay: HARKEN 40.2 STR Winch Handles: 10 Double Grip lock(2) 10 Single Grip lock(4) |
| Notes | Pulpits: S/s custom bow & stern rails with lights Stanchions: 6 tapered with braces, 4 tapered Stanchion bases: custom flush fit to deck radius Lifelines: Upper & Lower 1*19 s/s wire Spinlock Rope clutches for halyards, boom reef(4) Spinlock jammer boom reef, main halyard(2) Transverse jib tracks, Fully adjustable with underdeck purchase leading aft to jib trimmer. Cunningham led aft to mainsheet trimmer Outhaul led aft to mainsheet trimmer Mainsheet System German' style, lead under deck and back to main trimmer. Spinnaker fore guy Foredeck Hatch: Lewmar round size 22(1) Cockpit Lewmar hatches Low Profile Size20(2) Custom recessed Liferaft locker in cockpit floor. |

CRUISER RACER

www.cruiser-racer.com

Buscarons, 6. 08022 Barcelona (Spain)

Tel.: (+34) 934 186 632

Mobile: (+34) 616 420 634

E-Mail: info@cruiser-racer.com

C R U I S E R R A C E R

www.cruiser-racer.com

| SAFETY | |
|---------------------------|----------|
| Ce Registration | YES |
| Fire Extinguishers | YES |
| Epirb | no |
| Liferaft | YES |
| Notes | Complete |

| CONSTRUCTION | |
|--------------|--|
| Notes | <p>Keel: Keel floor support structure: Composite grid utilizing carbon where permitted by IMS rules. 0.3LOA-0.7LOA Part Lead fin with Stainless support structure and glass wood shoe. Keel is fairing in numeric control at 0.1 mm</p> <p>Ergal Rudder Stock with Epoxy/Carbon blade Upper and lower self aligning bearings JP3 Custom Tiller</p> |

| ACCOMODATIONS | |
|--------------------|---|
| Bath Shower | Yes |
| Notes | <p>Stove: 3 burner with oven Interior Layout is designed to meet the IMS Cruiser/Racer Regulations as well as the ORC Special Regulations to Category 2. Care has been taken in the layout to ensure good weight distribution and a good working interior. The interior will be lightweight and elegant. Interior minimum headliner with halogen lighting. Interior styling should feature composite/metal entrance steps. Simple combination of wood trimming with Carbon in-lay on saloon table, chart area, galley and sole.</p> |

EXTRA NOTES

C R U I S E R R A C E R

www.cruiser-racer.com

Buscarons, 6. 08022 Barcelona (Spain)

Tel.: (+34) 934 186 632

Mobile: (+34) 616 420 634

E-Mail: info@cruiser-racer.com

C R U I S E R R A C E R

www.cruiser-racer.com

EXTRA NOTES

Extra Notes

**Craddle
3 Fenders
4 lines berthing
1 Dehumidifier
1 Autopilot
8 handles
Tool box**

C R U I S E R R A C E R

www.cruiser-racer.com

Buscarons, 6. 08022 Barcelona (Spain)

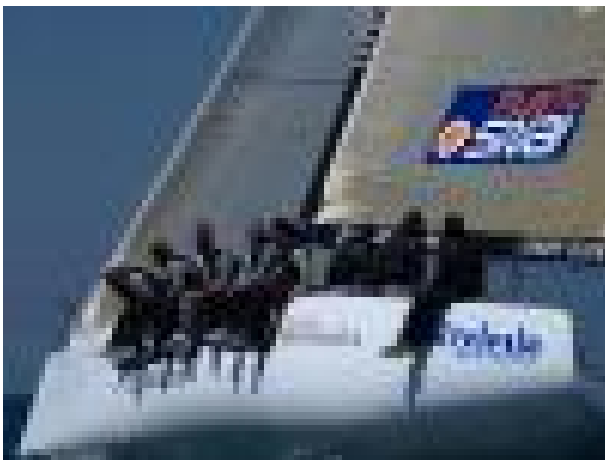
Tel.: (+34) 934 186 632

Mobile: (+34) 616 420 634

E-Mail: info@cruiser-racer.com

C R U I S E R R A C E R

www.cruiser-racer.com



C R U I S E R R A C E R

www.cruiser-racer.com

Buscarons, 6. 08022 Barcelona (Spain)

Tel.: (+34) 934 186 632

Mobile: (+34) 616 420 634

E-Mail: info@cruiser-racer.com

C R U I S E R R A C E R

www.cruiser-racer.com



C R U I S E R R A C E R

www.cruiser-racer.com

Buscarons, 6. 08022 Barcelona (Spain)

Tel.: (+34) 934 186 632

Mobile: (+34) 616 420 634

E-Mail: info@cruiser-racer.com

C R U I S E R R A C E R

www.cruiser-racer.com



C R U I S E R R A C E R

www.cruiser-racer.com

Buscarons, 6. 08022 Barcelona (Spain)

Tel.: (+34) 934 186 632

Mobile: (+34) 616 420 634

E-Mail: info@cruiser-racer.com

C R U I S E R
R A C E R
www.cruiser-racer.com



C R U I S E R
R A C E R
www.cruiser-racer.com

Buscarons, 6. 08022 Barcelona (Spain)

Tel.: (+34) 934 186 632

Mobile: (+34) 616 420 634

E-Mail: info@cruiser-racer.com

C R U I S E R R A C E R

www.cruiser-racer.com



C R U I S E R R A C E R

www.cruiser-racer.com

Buscarons, 6. 08022 Barcelona (Spain)

Tel.: (+34) 934 186 632

Mobile: (+34) 616 420 634

E-Mail: info@cruiser-racer.com